

# Person centered neonatal health care

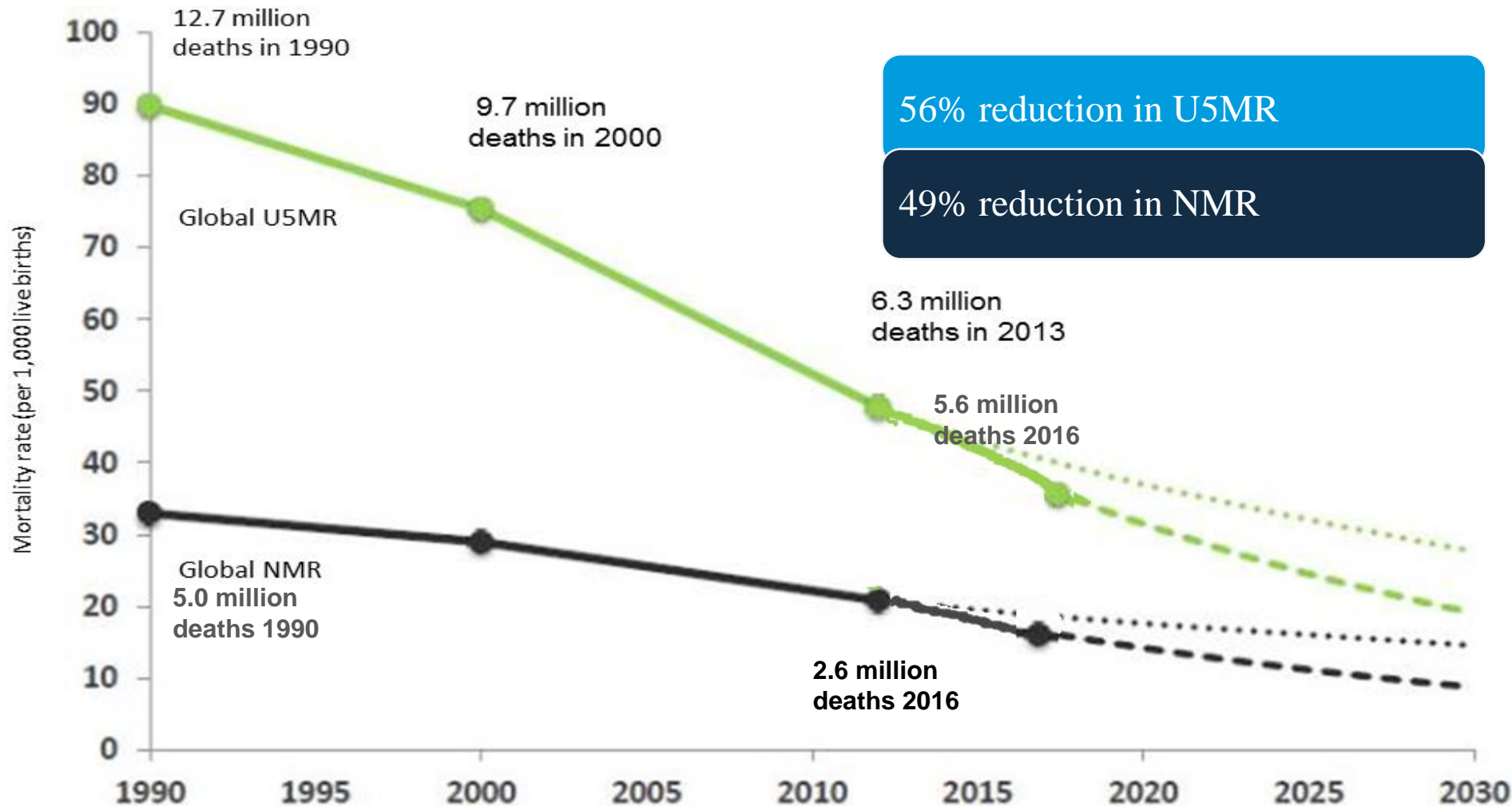


World Health  
Organization

**Dr Ornella Lincetto, MCA Department, WHO**

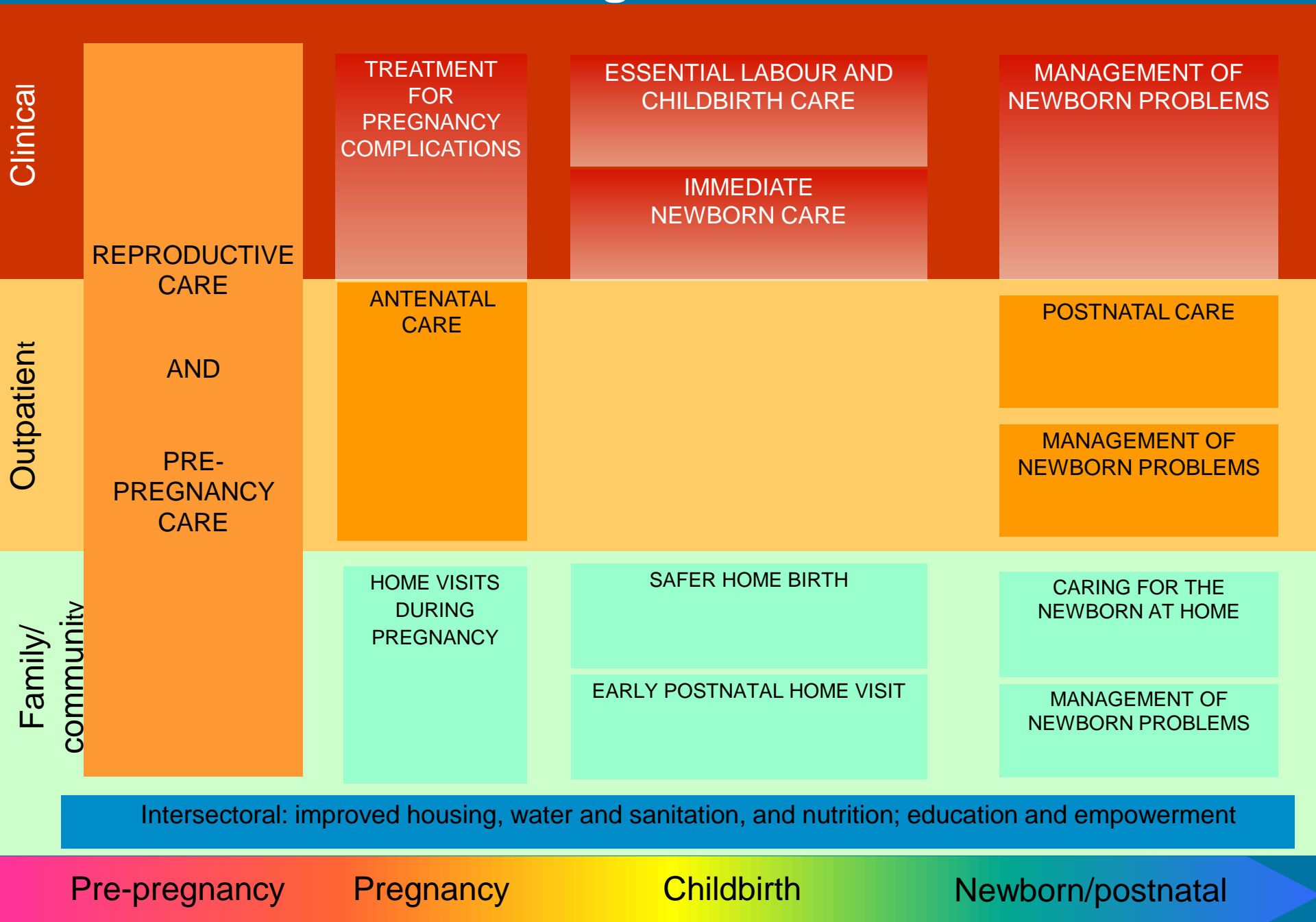
Geneva, 10 April 2018

# Under-5 mortality: Success but significant unfinished agenda



52 countries (mostly in SSA) need to accelerate progress to meet SDG targets by 2030.  
13 countries in AFR will not reach targets until after 2050.

# Packages of care



Clinical

Outpatient

Family/  
community

REPRODUCTIVE CARE AND PRE-PREGNANCY CARE

TREATMENT FOR PREGNANCY COMPLICATIONS

ESSENTIAL LABOUR AND CHILDBIRTH CARE

IMMEDIATE NEWBORN CARE

MANAGEMENT OF NEWBORN PROBLEMS

ANTENATAL CARE

POSTNATAL CARE

MANAGEMENT OF NEWBORN PROBLEMS

HOME VISITS DURING PREGNANCY

SAFER HOME BIRTH

EARLY POSTNATAL HOME VISIT

CARING FOR THE NEWBORN AT HOME

MANAGEMENT OF NEWBORN PROBLEMS

Intersectoral: improved housing, water and sanitation, and nutrition; education and empowerment

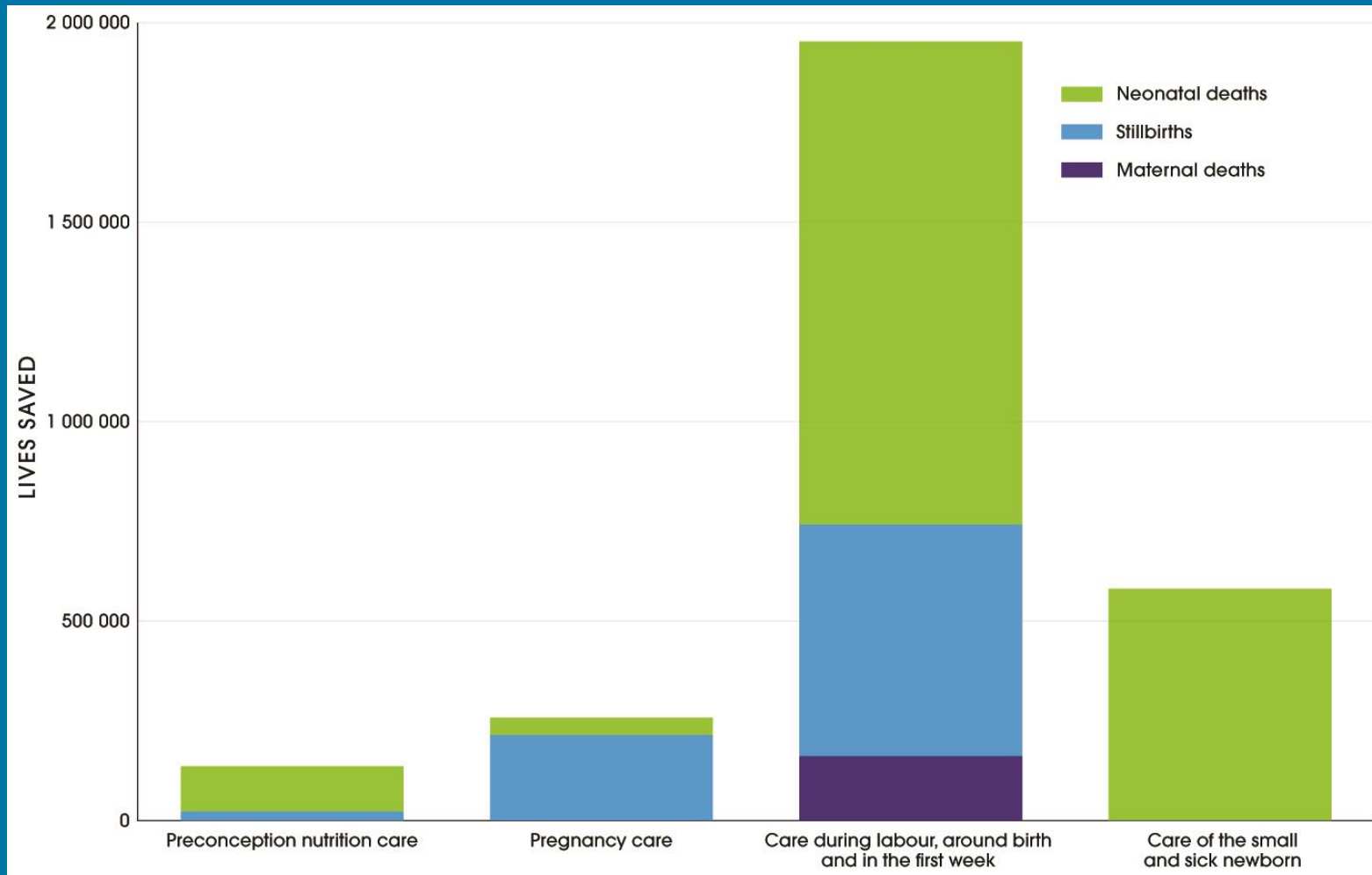
Pre-pregnancy

Pregnancy

Childbirth

Newborn/postnatal

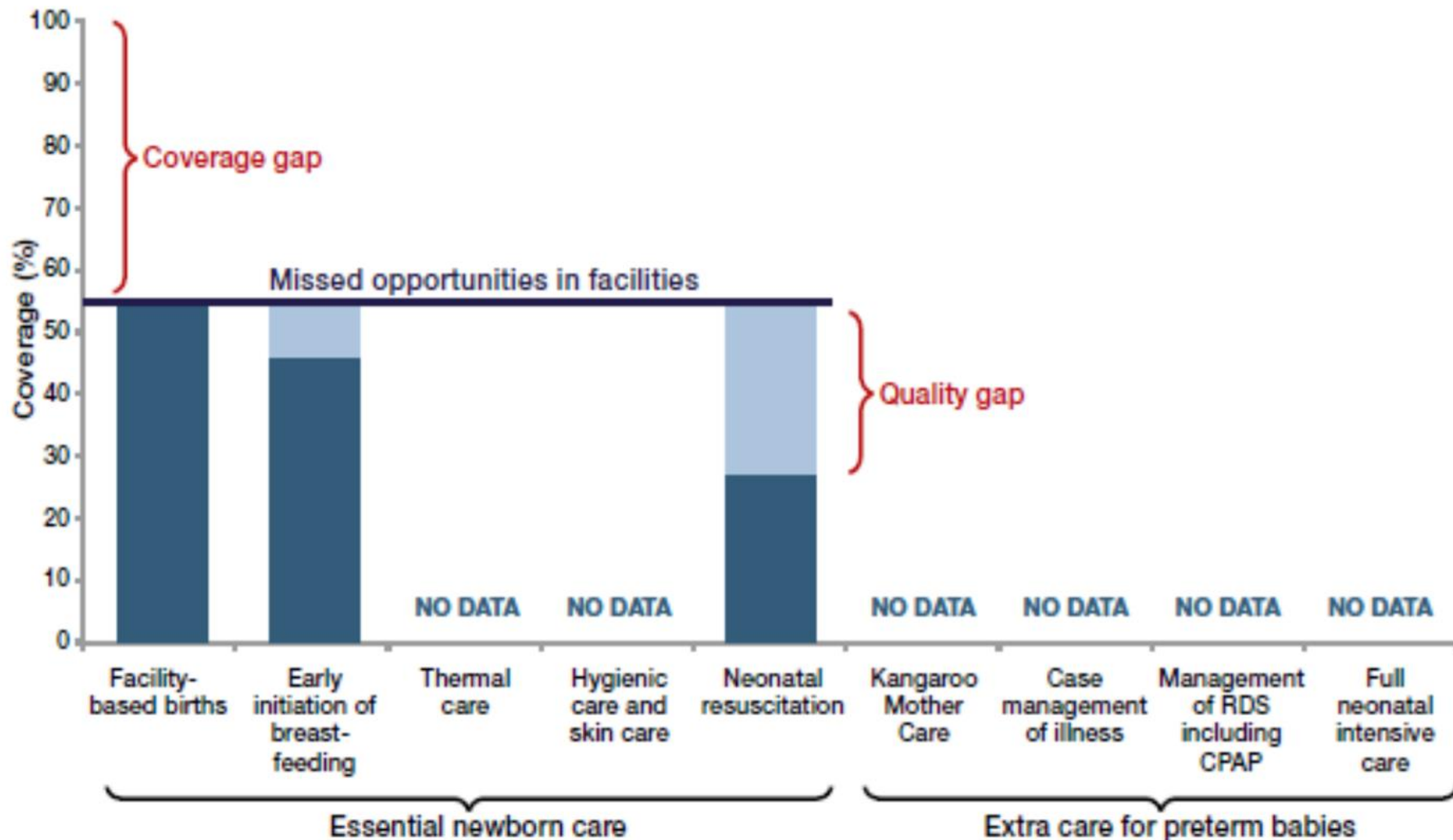
# Care around the time of birth: a triple return on investment



## Can available interventions end preventable deaths in mothers, newborn babies, and stillbirths, and at what cost?

Zulfiqar A Bhutta, Jai K Das, Rajiv Bahl, Joy E Lawn, Rehana A Salam, Vinod K Paul, Jeeva M Sankar, Hannah Blencowe, Arjumand Rizvi, Victoria B Chou, Neff Walker, for The Lancet Newborn Interventions Review Group and The Lancet Every Newborn Study Group

Figure 5.4: Missed opportunities to reach preterm babies with essential interventions, median for Countdown to 2015 priority countries



# Need to shift paradigm in service provision

- **Care based on newborn's needs and rights, quality of care and positive experience**
  - Person centered (baby & mother)
  - Family centered
  - People centered
- **Reorganization of health services**
- **Benefits for newborns, families and health system**



# Newborn/family centered care in LMICs



# Conclusions and way forward

- To accelerate progress in newborn survival and health a paradigm shift in care provision is required with newborn and family at the centre of care
- Models of care that value mother and family participation can benefit babies, families, communities and health systems
- Service delivery reforms should reorganise health services around people's needs and expectations so as to make them more responsive while producing better outcomes



# Thank you



World Health  
Organization

**WHO**

20, Avenue Appia  
1211 Geneva

Switzerland